



Wold View Farm

USEFUL INFORMATION - THE LODGES

We have 3 lodges on site; The Woodman's Cabin which sleeps 2 people, The Farmer's Retreat which sleeps 4 people and The Gamekeeper's Lodge which sleeps 6 people. The floorplan for each lodge is at the end of this document.

WHAT'S PROVIDED

Towels
Dressing gowns
Shampoo & conditioner
Bodywash & handwash
1 toilet roll per bathroom
Tea towel
Crocery
Glasses

Cutlery
Oven trays, pots, pans etc.
Dishwasher and tablets
Kitchen spray
Kitchen cloth
Small milk
Microwave
Toaster

THINGS YOU MAY WANT TO BRING

Milk
Tea
Coffee
Juice
Toilet roll
Pizza, ready meals etc. (something for dinner the night before the wedding that is easy to make) - details of local takeaways are also provided below
Breakfast items
Swimwear



Wold View Farm

LOCAL EATERIES

TAKEAWAYS IN DRIFFIELD

Bollywood - Indian
Trishna Tandoor - Indian
Marmaris Pizza and Grill
Domino's
Water Margin - Chinese
Stuarts - Fish and Chips

PUBS

The Old Star - Kilham
The Triton Inn - Sledmere
The Bosville Arms - Rudston
Mishka - Driffield

CHECK IN/OUT TIMES

Check in is at 5pm, however we will give you the keys as soon as the lodge is cleaned and ready if this is before 5pm.

Check out -

Sunday: 12 noon

Monday: 10am for the couple staying in the 1 bed lodge on the Sunday night*

OTHER

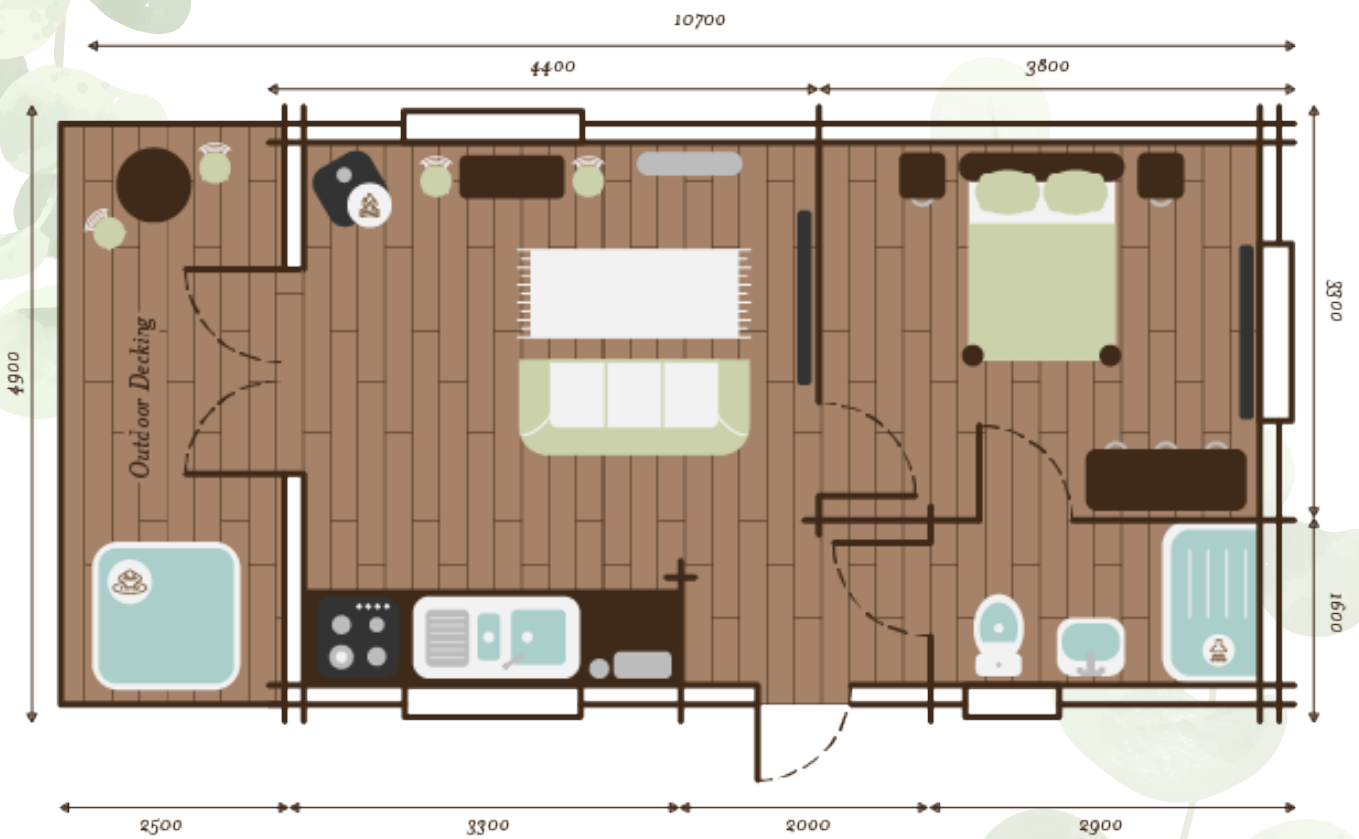
All lodges have Wi-Fi, Netflix, log burners, and hot tubs.

*From 2025



Wold View Farm

The WOODMAN'S CABIN



- Storage/Surfaces
- Water/Hygiene
- TV/Appliances
- Private Hot Tub
- Bed/Seating
- Electrics/Heating
- Structure/Windows
- Log Burner



Wold View Farm

The FARMER'S RETREAT



- | | | | |
|------------------|-------------------|-------------------|-----------------|
| Storage/Surfaces | Water/Hygiene | TV/Appliances | Private Hot Tub |
| Bed/Seating | Electrics/Heating | Structure/Windows | Log Burner |



Wold View Farm

The GAMEKEEPER'S LODGE



- Storage/Surfaces
- Water/Hygiene
- TV/Appliances
- Private Hot Tub
- Bed/Seating
- Electrics/Heating
- Structure/Windows
- Log Burner